



01 // SOLUTION BRIEF

# SewerAI AutoCode™ with NASSCO Review

The first cloud platform with full, immediate access to historical inspection data.

**19+ Yrs**

AI TRAINING & REFINEMENT

**100M+**

FEET OF PIPE VIDEO CODED

**2,000+**

CITIES IN USE

**750K+**

NASSCO SURVEYS COMPLETED

**115K+**

MANHOLES REVIEWED & CODED

**125+**

3RD PARTY ACCURACY AUDITS

TRUSTED BY CONTRACTORS, MUNICIPALITIES, & ENGINEERING FIRMS NATIONWIDE



02 // THE CHALLENGE

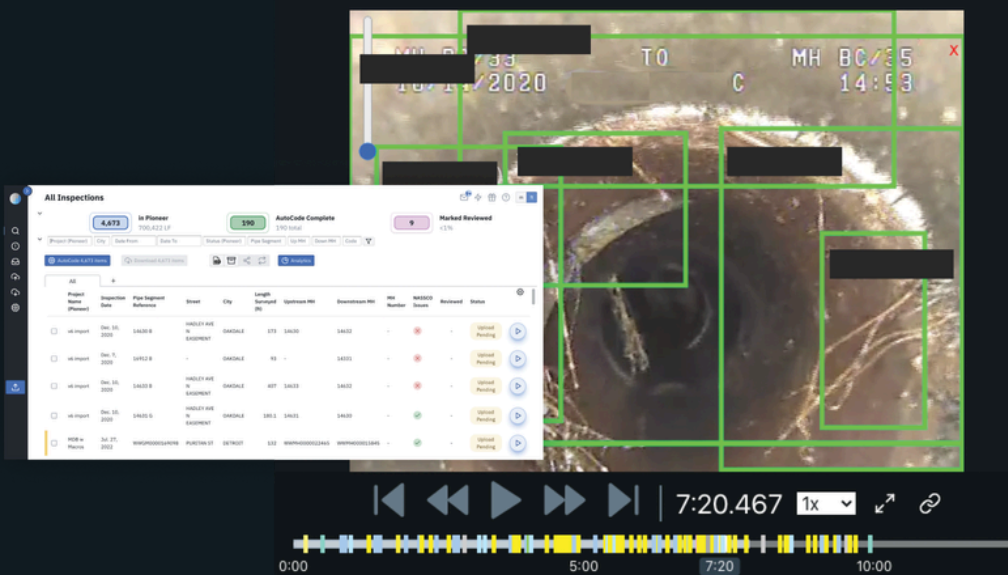
# Traditional inspection is **slow, inconsistent, and isolated.**

Camera operators work alone with **delayed or no feedback**, producing results that vary by operator. Manual coding cannot scale to meet growing infrastructure demands, and AI alone is not enough.

03 // THE SOLUTION

# AutoCode™ is AI that works **with humans, not instead of them.**

Computer vision AI trained on **7+ years and 100M+ feet** of real pipe data automatically detects NASSCO conditions. Every result is reviewed by a certified technician. Operators need **zero new software or hardware.**



**6X Faster**  
3,000+ LF/DAY

**Hardware Agnostic**  
ANY CCTV EQUIPMENT

**No New Software**  
ZERO OPERATOR TRAINING

**NASSCO Compliant**  
PACP · LACP · MACP

# Three steps. Multi-layer human verification at every stage.

AI-powered inspection with certified technicians and senior QC specialists working together. Never in isolation.

## STEP 01

### AI PROCESSING

# 01

- Identifies **anomalous and critical defect regions** per NASSCO standards.
- Flags **low-confidence observations** for prescreen review.
- Continuously **retrained** from ongoing QC results.

## STEP 02

### TECHNICIAN REVIEW

# 02

- NASSCO-certified technician validates, corrects, and **finalizes** the inspection.
- Ensures full **NASSCO PACP / LACP / MACP** compliance.
- Real-time collaboration to **catalog challenging observations**.

## STEP 03

### SENIOR QC AUDIT

# 03

- Random 5% sample escalated for final audit by senior specialists.
- AI flags unusual patterns for **additional review**.
- Drives the metrics that ensure **client expectations are met**.

## THE DIFFERENCE

While camera operators typically work in isolation with occasional, delayed feedback, our NASSCO technicians operate in live, collaborative sessions. Working directly with our AI team and our most senior QC specialists in real-time, we identify and implement improvements on the fly, evolving **faster and more precisely** than industry norms allow.

**18** CERTIFIED NASSCO TECHNICIANS

**175 Yrs** COMBINED EXPERIENCE

## 05 // PROVEN PERFORMANCE

# Internal quality metrics: our standard.

## OBSERVATION INTEGRITY

# >90%

of observations unchanged following QC audit

## INSPECTION GRADE INTEGRITY

# >98%

of final inspection grades unchanged

*Grade change = any inspection modified from Grade ≤3 to Grade 4–5, or vice versa, following QC audit.*

## 06 // PERFORMANCE MONITORING

## Performance monitoring & corrective action.

- 1 All quality metrics updated in **real-time** on a centralized dashboard. Transparent to technicians, QC staff, and leadership.
- 2 If performance falls below thresholds, **QC audit frequency is increased** to provide targeted feedback and support.
- 3 Persistent errors in **Grades 4 and 5** trigger targeted interventions: coaching, focused retraining, or comprehensive defect-code audits.
- 4 Feedback loops ensure **accountability and professional development**, and feed critical data back into AI retraining.

## 07 // QAI OFFERING

## Quality assurance for inspections (QAI).

SewerAI provides direct access to our quality review tools as part of QAI, equipping customers to **quickly verify inspections at scale** without consuming manual data checks.

- ✓ Video quality verification
- ✓ Flagged / actionable codes
- ✓ Required header fields
- ✓ Batch inspection review

SUPER. HUMAN. RESULTS.

08 // GET IN TOUCH

# Your backlog isn't going to **code itself.**

You've got pipe in the ground. We've got the AI. Let's move.

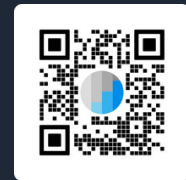
[Book a demo →](#)

OR CALL +1 (855) 952-2200



The #1 platform for **underground  
infrastructure management.**

+1 (855) 952-2200 · [sales@sewerai.com](mailto:sales@sewerai.com) · [www.sewerai.com](http://www.sewerai.com)



SUPER. HUMAN. RESULTS.